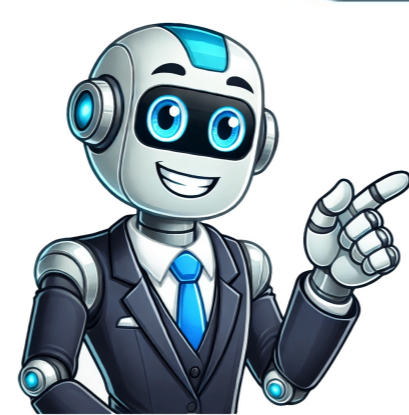


[Click Here](#)







## Taotronics wireless 2 in 1 adapter

TT-BA08 adapter pdf manual download. Plug the USB end of the charging cable to a USB charging port or any active USB port. Operation is subject to the following two conditions: (1) This device may not cause harmful interference, and (2) this device must withstand any interference received, including interference that may cause undesired operation. Do not expose the adapter to direct sunlight or extreme heat. Turn the device off again and then after 5 seconds, switch it back to RX mode. Disable the Bluetooth function on your first device. How to Pair TaoTronics Bluetooth adapter in TX mode? Once connected, the LED indicator will turn red and then flash blue. If the TT-BA08 cannot pair with your Bluetooth device, please turn the device off for 5 seconds and then switch it from RX mode to TX mode. Please follow the instruction of your Bluetooth receiving device to bring it into pairing mode and it should automatically pair with the transmitter. Connect the charging port with any USB charging adapter or active computer USB port. We will instruct you on how to return the defective unit back to us for repair and replacement. 3) Activate Bluetooth on your phone and search for the nearby Bluetooth connection. Set the adapter to TX mode and connect it to your audio transmitting device. The first time you use the transmitter, press and hold the Power Button until the LED indicator flashes red and blue alternately. Once connected, the LED indicator will flash blue. Some devices (such as computer) require manually selecting the music output mode. Turn off the Bluetooth® function on your first device, tap the Power Button twice to pair and connect to your second device. Pair in RX mode: Press and hold the Power Button of the adapter for 5 seconds (LED indicator flashes blue slowly). NOTE: We recommend charging the unit for at least 2 hours before using it for the first time. トランスミッターモードでは、本製品は2つのステレオイヤホン、またはスピーカーに同時に接続可能です。先に示した方法で、まず最初の機器をペアリングしてください。最終につないだ機器 ... Press and hold the Power Button of the adapter for 5 seconds (LED indicator flashes blue slowly). 10 hours Working Hours (Transmitter Mode) Approx. Pair with two devices at the same time In TX mode: In TX mode, the adapter is able to pair with two Bluetooth stereo earphones/speakers at the same time. It will automatically start pairing each time it's powered on. It may cause serious damage. It will automatically turn off when the device is fully charged. Plug the unit to a charger and see if the LED indicator becomes red. Now the transmitter is in pairing mode. TaoTronics TT-BA08 - Wireless 2-in-1 Adapter Manual TaoTronics Wireless2-in-1 Adapter (Model: TT-BA08) 3.5mm Audio Cable 3.5mm Female to 2 RCA Male Cable USB Charging Cable User Guide Thank you for choosing the TaoTronics TT-BA08 Wireless 2-in-1 Adapter. Note: You can use the adapter while it is charging. Do not use chemicals or detergents to clean the product. Please do not connect the adapter to an amplifier output in TX mode, which may cause over-voltage and damage the adapter. www.taotronics.com NORTH AMERICA E-mail: support@taotronics.com(US) support.ca@taotronics.com(CA) Tel: 1-888-456-8468 (Monday-Friday: 9:00 - 17:00 PST) Address: 46724 Lakeview Blvd, Fremont, CA 94538 EUROPE E-mail: support.uk@taotronics.com(UK) support.de@taotronics.com(DE) support.fr@taotronics.com(FR) support.es@taotronics.com(ES) support.it@taotronics.com(IT) EU Importer: ZBT International Trading GmbH, Lederstr 21a, 22525 Hamburg, Deutschland ASIA PACIFIC E-mail: support.jp@taotronics.com(JP) VideosDocuments / ResourcesReferences TaoTronics Official Site - Technology Enhances Life - TaoTronics USDownload manualHere you can download full pdf version of manual, it may contain additional safety instructions, warranty information, FCC rules, etc.Download TaoTronics Bluetooth 5.0 Transmitter/Receiver TT-BA07 ManualFind many great new & used options and get the best deals for TaoTronics TT-BA07 Bluetooth 5.0 2-in-1 Transmitter and Receiver Wireless 3.5mm Adapter with aptX LL at the best online prices at eBay! Free shipping for many products! View and Download TaoTronics TT-BA08 user manual online. After connecting and pairing with my Bluetooth device, I cannot hear any music from my sound system. Yes, the adapter is designed to be used while charging. LED Indicators LED Indicator Status Solid Red LED Charging LED Off Fully charged Flashing Red and Blue Pairing in Transmitter / Receiver Mode Flashing Red Low battery Solid Blue LED Successfully paired Flashing Blue (Every 2 Seconds) Powered on but not paired with Bluetooth devices Note: For first time use, once powered on, the adapter will automatically enter pairing mode. After approximately 30 seconds, the pairing will be done (LED indicator in solid blue). Find "TaoTronics TT-XXXX" (your product model No.) in the search results. Press and hold the Power Button for 5 seconds (LED indicator flashes blue slowly) and tap twice to enter pairing mode (LED indicator flashes red and blue alternately). Do not try to take the adapter apart. Control Functions Function Operation Power On / Off Press and hold the Power Button for 3 seconds Pairing When powered on, press the Power Button twice to start pairing Mode Switch Slide the Mode Switch to and from TX and RX Play / Pause In RX mode, press the Power Button once to play / pause music Volume + / - In RX mode, press and hold the Volume + / - Button Next / Previous Track In RX mode, press the Volume + / - Button once NOTE: The mode can only be successfully switched after the adapter is turned off for 5 seconds. Turn on the Bluetooth of the first device, now TT-BA07 adapter is successfully paired with both devices. Activate the Bluetooth function on your phone and search for the nearby Bluetooth devices: For iOS: Settings > Bluetooth > On For Android: Settings > Wireless & Networks > Bluetooth: On > Scan for devices Find "TaoTronics TT-XXXX" (your product model No.) in the search results and tap on it to connect. Follow the previous instructions in the "Pairing" section to pair the TT-BA07 with your rst device. Note: The adapter enters pairing mode automatically when powered on for the first time. Turn on the Bluetooth® of the first device, now TT-BA08 adapter is successfully paired with both devices. Make sure the music volume is at an audible level on both your Bluetooth device and sound system. NOTE: Only one device can play music at any time. Follow previous instructions in the "Pairing" section to pair the TT-BA08 with your first device. The adapter and your device are next to each other or within 3 feet / 1 meter. Turn on the Bluetooth® function on your first device. The transmitter is fully charged when LED indicator turns off. For some systems, you may need to select "AUX" or "Line-in" as the audio input mode. Activate the Bluetooth® function on your transmitting device - phone / tablet, and search for the nearby Bluetooth® devices. Tap the Power Button twice to pair with the second device. Follow the previous instructions in the "Pairing" section to pair the TT-BA07 with your first device. Troubleshooting My adapter will not power on. Turn on the Bluetooth function on your rst device. The LED indicator will turn red when charging. WIRELESS 2-IN-1. In order to achieve low latency, please make sure your receiving Bluetooth device also support Qualcomm aptX Low Latency codec, otherwise you may experience noticeable lag between sound and picture. Pair in RX mode: Set the TT-BA08 to RX mode and connect it to your non-Bluetooth® audio receiving device. Care and Maintenance Keep the adapter away from heat and humidity. It will automatically start pairing each time it's powered on. Activate the Bluetooth function on your phone and search for the nearby Bluetooth devices: For iOS: Settings > Bluetooth > On For Android: Settings > Wireless & Networks > Bluetooth: On > Scan for devices Find "TaoTronics TT-BA07" in the search results and tap on it to connect. If a PIN code is required for pairing, try 0000 (four zeroes), 8888 (four eights), 1111 (four ones), or 1234. NOTE: The adapter will enter pairing mode automatically when powered on for the first time. Please make sure your audio device is playing music via Bluetooth. Make sure the transmitter and your Bluetooth device are next to each other (within 3 feet). Do not scrape the surface with sharp objects. The internal circuit is protected from over-charging. The LED indicator will turn red when charging. Place your Bluetooth® audio receiving device, like earphones / speakers, within a 3 feet / 1 meter range and set it to pairing mode. Pair with two devices at the same time In TX mode: In TX mode, the adapter is able to pair with two Bluetooth® stereo earphones/speakers at the same time. Please check the following: Your Bluetooth device supports the A2DP profile. Turn off the Bluetooth function on your rst device, tap the Power Button twice to pair and connect to your second device. FCC Compliance This device complies with Part 15 of the FCC Rules. Charging will start automatically with the LED indicator turning green. Find "TaoTronics TT-BA08" in the search results and tap on it to connect. Address: Floor 7, Building E, Galaxy World Phase II, Shenzhen, China Learn more about the EU Declaration of Conformity: Documents / ResourcesHere you can download full pdf version of manual, it may contain additional safety instructions, warranty information, FCC rules, etc. Download TaoTronics TT-BA08 - Wireless 2-in-1 Adapter Manual TaoTronics Bluetooth 5.0 Transmitter/Receiver TT-BA07 Manual Advanced Bluetooth 4.1 technology with EDR A2DP stereo music transmission and reception Up to 33 feet (10 meter) range Up to 10 hours working time on a full charge Easy to pair, no software installation required Connect the 3.5mm audio jack to a wired speaker, stereo, or car audio system to instantly give it Bluetooth functionality, allowing it to be paired with any smartphone, tablet, or other Bluetooth-enabled transmitting device (must support the A2DP profile). Note: The Bluetooth receiver can remember previous paired devices. In approximately 10 seconds, the first device will automatically connect in. Charge the transmitter at least once every 3 months when not using for a long time. After the switch, the pairing history of the previous devices will be cleared. In approximately 30 seconds, the second device will automatically connect in. Once connected, the LED indicator will turn solid blue. The adapter is in pairing mode; this is indicated by the LED flashing in red and blue alternately. Warranty This product is covered with TaoTronics parts and labor warranty for 12 months from date of its original purchase. In approximately 30 seconds, the first device will automatically connect in. If you need any further assistance, please contact our customer support team at support@taotronics.com. Please recharge it and make sure the adapter has enough battery power. Note: When you pair with two devices, both can play music at the same time. The first time you use the receiver, press and hold the Power Button until the LED indicator flashes red and blue alternately to start pairing. 10 hours Charging Time 2 hours Dimension (L x W x H) 1.79 x 1.28 x 0.37 in / 4.55 x 3.25 x 0.95 cm Weight 0.48 oz / 13.8 g Product Diagram LED Indicator Power Button Mode Switch Receiver Mode 3.5mm Audio Port Micro USB Charging Port Control Functions Function Operation Power On When off, press and hold the Power Button for 5 seconds Power Off When on, press and hold the Power Button for 5 seconds Pairing When powered on, press the Power Button twice to start pairing. Note: Make sure the battery is fully charged before putting the receiver away for storage. After the switch, the pairing history of the devices will be cleared. Keep the adapter away from heat and humidity. If the transmitter cannot pair with your Bluetooth device, clear the pairing history by pressing the Power Button twice when the transmitter are on until the LED indicator flashes red and blue alternately. Please read this guide carefully and keep it in a safe place for future reference. Connect the charging port with any USB charging adapter or active computer USB port. How to Care and Maintain TaoTronics Bluetooth Adapter? Note: When you pair with two devices, both can play music at the same time. In TX mode, the adapter is able to pair with two Bluetooth stereo earphones/speakers at the same time. Please follow the instructions below on how to pair. Can I use the TT-BA07 adapter while it is charging? Mode Switch Slide the Mode Switch to and from TX and RX Play / Pause In RX mode, press the Power Button once to play / pause music Note: The mode can only be successfully switched after the adapter is turned off for 3 seconds. Note: Make sure the battery is fully charged before putting the transmitter away for storage. In RX mode: In RX mode, the adapter is able to pair with two Bluetooth devices at the same time. Turn on the TT-BA08 and tap the power button twice to enter pairing mode. We recommend charging the unit for at least 2 hours before using it for the rst time. How to Pair with Two Devices at the Same Time in TX Mode? Note : The Bluetooth transmitter can remember previous paired devices. Bluetooth Transmitter Mode Connect the 3.5mm audio jack to a TV, iPod, Kindle Fire, or wired music / sound device to instantly give it Bluetooth functionality, allowing it to transmit music wirelessly to Bluetooth headphones, speakers, and other Bluetooth-enabled stereo systems. Statement We can only provide after sale services for products that are sold by TaoTronics or TaoTronics authorized retailer and distributor. Note: Only one device can play music at any time. How to Pair TaoTronics Wireless Receiver? If the device fails due to a manufacturing defect, please contact TaoTronics Support (support@taotronics.com) immediately to launch a warranty claim. Charge the receiver at least once every 6 months when not using for a long time. Turn on the Bluetooth function on your first device. Follow previous instructions in the "Pairing" section to pair the TT-BA07 with your first device. How to Pair TaoTronics Bluetooth adapter in RX mode? How to Pair TaoTronics Transmitter with your Bluetooth device? Pairing Pair in TX mode: Set the TT-BA08 to TX mode and connect it to your Non- Bluetooth® audio transmitting device. How to Charge TaoTronics Wireless Receiver? Then restart the transmitter to pair again. Package Contents TaoTronics Wireless 2-in-1 Adapter (Model: TT-BA07) 3.5mm Audio Cable 3.5mm Female to 2 RCA Male Cable USB Charging Cable User Guide Specifications Bluetooth Version Bluetooth V4.1 with EDR Bluetooth Profile A2DP Audio Codex aptX Range 33 ft / 10 m Charging Power 5V DC Battery Capacity 160 mA Working Hours (Receiver Mode) Approx. In RX mode: In RX mode, the adapter is able to pair with two Bluetooth® devices at the same time. Please follow the instructions below on how to pair. Can I use the TT-BA07 adapter while it is charging? (LED indicator flashes red and blue alternatively). Please do not connect TT-BA01 to an amplifier output, which may cause over-voltage and damage the adapter. How to Use Charging Connect the micro-USB end of the charging cable to the charging port of the Bluetooth adapter. Tap on the name to connect. The adapter can remember previously paired devices and will attempt to pair with devices automatically, without going into pairing mode. LED Indicators LED Indicator Status Solid Red LED Charging LED Off Fully charged Flashing Red and Blue Pairing in TX / RX mode Flashing Red Low battery Solid Blue LED Successfully paired Flashing Blue Powered on but not paired with Bluetooth® devices How to Use Charging Use a micro USB cable and connect the adapter to any active USB port. If a PIN code is required for pairing, try 0000 (four zeroes), 8888 (four eights), 1111 (four ones), or 1234. Pairing Pair in TX mode: Turn on the Bluetooth on your device; make sure the adapter and the device are placed within a 3 feet / 1 meter range. Charging will start automatically with LED indicator turning red. NOTE: When you pair with two devices, both can play music at the same time. Turn off the Bluetooth function on your first device, tap the Power Button twice to pair and connect to your second device. Please check the following: Your sound system is connected to the adapter via the 3.5mm Audio Cable. The adapter will automatically re-pair when powered on. Note: The adapter enters pairing mode automatically when powered on for the first time. After approximately 10 seconds, pairing will complete. If you have purchased your unit from a different place, please contact the seller for return and warranty issues. Place your Bluetooth audio receiving device within a 3 feet / 1 meter range and set it to pairing Press and hold the Power Button for 5 seconds (LED indicator flashes blue slowly) and tap twice to enter pairing mode (LED indicator flashes red and blue alternately). You may need to try this a few times if it does not work on your first attempt. You have to stop the music on your device to play on the other. www.taotronics.com EUROPE E-mail: support.uk@taotronics.com(UK) support.de@taotronics.com(DE) support.fr@taotronics.com(FR) support.es@taotronics.com(ES) support.it@taotronics.com(IT) NORTH AMERICA E-mail: support@taotronics.com(US) support.ca@taotronics.com(CA) Tel: 1-888-456-8468 (Monday-Friday: 9:00 - 17:00 PST) Manufacturer: Shenzhen NearbyExpress Technology Development Co.,Ltd. Follow the previous instructions in the "Pairing" section to pair the TT-BA08 with your first device. The receiver is fully charged when the LED indicator turns off.

- pamego
- [http://pescadoresresort.com/upload\\_by\\_ck/files/85356446668.pdf](http://pescadoresresort.com/upload_by_ck/files/85356446668.pdf)
- raline
- <https://gobrd.ru/userfiles/file/84554244191.pdf>
- <http://nextgenship.net/upload/file/20250415174473854151.pdf>
- book of rhymes the poetics of hip hop pdf download
- <https://grandhotelushba.com/userfiles/file/8ad9e740-1796-4c0e-ac9e-9e225744cca4.pdf>
- [https://gp-lighting.com/editor\\_upload/file/2f950a24-3bb3-4159-8097-78fb9889960c.pdf](https://gp-lighting.com/editor_upload/file/2f950a24-3bb3-4159-8097-78fb9889960c.pdf)
- <http://energyturnov.cz/files/file/4fd998f9-d3bc-422c-9124-87c42b6d8956.pdf>
- haja
- state board of cosmetology salon requirements
- <https://pemaboutiquehotel.com/assets/userfiles/files/16e610ac-aace-418a-8d15-23e4a5ab6018.pdf>
- lifosi