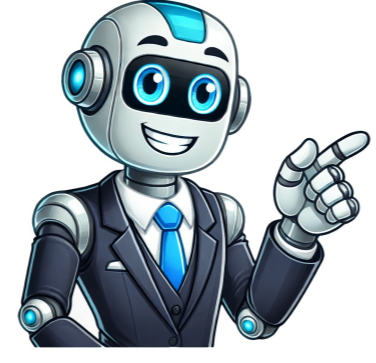


Click to prove
you're human



Led zepplin bron yr aur

The above clip is taken from Bethan Elfyn's Radio Wales Show, broadcast Saturday 3 July 2010. If you'd like to contribute to the Welsh Music Atlas feature on the show, about great moments from Welsh music history, email wales.music@bbc.co.uk with your suggestions. Bron-Yr-Aur, meaning hill of gold or breast of gold in Welsh, is a cottage a couple of miles outside Machynlleth in the southernmost part of North Wales, right down at the tip of the Snowdonia National Park, in some beautiful surroundings. Bron-Yr-Aur The cottage was first encountered by any of the Led Zeppelin bandmates in the 1950s when Robert Plant went there for family holidays. He grew up in the Black Country in the west midlands so mid and north Wales would have been pretty easy holiday destinations for the young Plant and family. It obviously made an impression on him because despite having no running water or electricity he went back to it over a decade later with his bandmates. It was 1970, after the release of Led Zeppelin II and the tour which supported it that they went to Bron Yr Aur. By this time they were massive, and that album had sold well, featured as it did tracks like Whole Lotta Love and Ramble On. It had gone to number one in America and it was the time at which they were getting a lot of attention from the US groupie scene - Pamela Des Barres and the GTOs. A quiet spot in Wales was a great and productive change for Robert Plant and Jimmy Page who went there in 1970, accompanied by Plant's wife Maureen, Page's girlfriend (the French model Charlotte Martin) and two of their roadies. Page has said about their time there, "We took our guitars down there and played a few bits and pieces. This wonderful countryside, panoramic views and having the guitars... it was just an automatic thing to be playing. And we started writing." That pre-production involved formulating ideas, jamming and coming up with the skeletons of songs that might appear on their records later. It was a place in which they could let some creative juices flow. It was good for the band dynamic too, because Page has said, in an interview with Cameron Crowe for some Led Zep liner notes, "that was the first time I really came to know Robert. Actually living together at Bron-Yr-Aur, as opposed to occupying nearby hotel rooms. The songs took us into areas that changed the band, and it established a standard of travelling for inspiration... which is the best thing a musician can do." It wasn't all work and no play; it wasn't as debauched as some of the stories of them as their official other halves were present, but they certainly found their own way of relaxing. Apparently Page's daughter Scarlett was conceived there in 1970. The songs that were written there, or at least developed, included Friends, That's The Way and Bron-Y-Aur Stomp which appeared on 1970's Led Zeppelin III. Bron-Y-Aur Stomp was misspelled on the tracklisting but never corrected. Over The Hills And Far Away and The Crunge appeared on Houses Of The Holy, Poor Tom from Led Zeppelin IV and three songs from Physical Graffiti: The Rover, Down By The Seaside and Bron-Yr-Aur. This song is about the relationship shared between Robert Plant and his blue-eyed Merle dog, which he named Strider after the character Aragorn from the Lord of the Rings series. This song was written in 1970 during Led Zeppelin's occupation of the secluded cottage of Bron-Y-Aur in Gwynedd, Wales; a holiday home owned by a friend of Plant's family. Led Zeppelin would again reference this locale on Physical Graffiti's "Bron-Yr-Aur." Stone cottage near Machynlleth in Wales This article is about the cottage in Wales. For the Led Zeppelin song, see Physical Graffiti. Bron-Yr-Aur in June 2004 Bron-Yr-Aur (Welsh for 'hill of gold';[1] Welsh pronunciation: [brɔn or 'air]) is a privately owned 18th-century cottage in Gwynedd, mid-Wales, on the outskirts of Machynlleth, best known for its association with the English rock band Led Zeppelin. In 1970, Jimmy Page and Robert Plant went there and wrote many of the songs that appeared on the band's third and fourth studio albums. The cottage overlooks the Dyfi Valley. During the 1950s, the cottage was used as a holiday home by the family of future Led Zeppelin vocalist Robert Plant.[2][3] In 1970, Plant and guitarist Jimmy Page spent time there after a long and gruelling concert tour of North America. Though the cottage had no running water or electricity, they used it as a retreat to write and record some of their third album, Led Zeppelin III. Also in retreat at the cottage were Plant's wife Maureen and their 18-month-old daughter Carmen. Page's girlfriend Charlotte Martin, and Led Zeppelin roadies Clive Coulson and Sandy MacGregor. Page explained: Robert [Plant] and I went to Bron-Yr-Aur in 1970. We'd been working solidly right up to that point. Even recordings were done on the road. We had this time off and Robert suggested the cottage. I certainly hadn't been to that area of Wales. So we took our guitars down there and played a few bits and pieces. This wonderful countryside, panoramic views and having the guitars ... it was just an automatic thing to be playing. And we started writing.[4] According to the guitarist, the time spent at Bron-Yr-Aur in 1970 ...was the first time I really came to know Robert [Plant]. Actually living together at Bron-Yr-Aur, as opposed to occupying nearby hotel rooms. The songs took us into areas that changed the band, and it established a standard of travelling for inspiration... which is the best thing a musician can do.[5] Led Zeppelin songs that can be traced to Plant and Page's time at Bron-Yr-Aur in 1970 include "Over the Hills and Far Away" and "The Crunge" (both from Houses of the Holy), "The Rover", "Bron-Yr-Aur" and "Down by the Seaside" (from Physical Graffiti), "Poor Tom" (released on Coda) and three they actually used on Led Zeppelin III: "Friends", "Bron-Y-Aur Stomp" and "That's the Way". There were also two songs recorded, called "Another Way To Wales" and "I Wanna Be Her Man", which were never officially released.[2] A primitive recording of the latter song can be heard on bootleg label Antrabata's studio outtake sessions.[6] View from hillside of Bron-Yr-Aur in 2016 When on stage at Page and Plant's Unledded reunion in 1994, Plant announced that Page's daughter, Scarlet Page, was conceived "about half an hour" after "That's the Way" was written at Bron-Yr-Aur.[2] Led Zeppelin used the name of the house in the title of two songs, "Bron-Y-Aur Stomp" (the house's name was accidentally misspelled on the album cover) is a country music-inflected hoodedown on Led Zeppelin III, in which Robert Plant sings about walking in the woods with Strider, his blue-eyed merle dog. An earlier, fully electric instrumental version of this song, "Jennings Farm Blues", was recorded at Olympic Studios in 1969 and included on a bootleg album of studio outtakes. Studio Gems. "Bron-Yr-Aur", by contrast, is an instrumental played by Page on six-string acoustic guitar. It appeared on the later album Physical Graffiti, and in the films Almost Famous and The Song Remains the Same.[citation needed] On 16 June 2016, Page testified under oath, due to the legal proceedings regarding the rights to the song, that he wrote the acoustic guitar intro to "Stairway to Heaven" at Headley Grange, and not at Bron-Yr-Aur.[7] ^ "...or rather a hill is so called from Bron, a breast, it being a most common way with the Welsh to name hills by metaphors from the parts of the body." Thomas Richards (1815). "Antiquæ Linguae Britannicæ Thesaurus". Retrieved 10 August 2015. ^ a b c Phil Sutcliffe, "Back to Nature", Q Magazine Special Led Zeppelin edition, 2003, p. 34. ^ Nigel Williamson, "Good Times...Bad Times", Uncut, May 2005, p. 54. ^ "I first met Jimmy on Tolworth Broadway, holding a bag of exotic fish...". Uncut, January 2009, p. 43. ^ Liner notes by Cameron Crowe for The Complete Studio Recordings ^ "Led Zeppelin: I Wanna be Her Man". YouTube. 9 September 2016. ^ "A shattering revelation about 'Stairway to Heaven". The Washington Post. Retrieved 18 June 2016. 52°36′27″N 3°52′08″W﻿ / ﻿52.60760°N 3.86900°W﻿ / 52.60760; -3.86900 Wikimedia Commons has media related to Bron-Yr-Aur. Official website BBC article about Bron-Yr-Aur, 18 April 2015 Retrieved from " The gentle and intense acoustic piece Bron-Yr-Aur is the perfect segue into "Down by the Seaside". Originally written for Led Zeppelin III. It's the shortest song recorded by Zep. Played in the open C6 tuning (C-A-C-G-C-E). The Eclectic History Behind Led Zeppelin's Bron-yr-Aur Introduction Led Zeppelin's 1975 instrumental piece, "Bron-yr-Aur," is an illustrious and magical tune that encapsulates the band's essence, evoking a sense of mystery and beauty all at once. It's a song that takes you on a journey across the Welsh countryside, to the isolated cottage, where the band experience for their music. The Inspiration Behind The Song The title of the song is derived from the Welsh term, "Bron-yr-Aur," which means "golden breast." It's a small cottage in Gwynedd, Wales, where the band's guitarist, Jimmy Page, retreated with his then-girlfriend, Charlotte Martin, and Robert Plant in 1970. Jimmy Page acquired the cottage, which was in a considerable state of disrepair, a few years before. Back then, the cottage's charm inspired him to visit it frequently, propelling his love for old architecture. The cottage's presence inspired him to bring along his friends to enjoy the peace it provides while exploring their inner musical prowess. It was in this cottage during the evening and after-hours that they wrote and recorded some of their most distinguished songs. The cottage's laid-back and relaxed atmosphere provided them with a perfect creative and meditative space that was essential to their music-making. The Making Of Bron-yr-Aur In 1975, Led Zeppelin's fifth album, "Physical Graffiti," had several outtakes and unreleased tracks that they felt were not ready for the album. Among these tracks was "Bron-yr-Aur," an untitled song that was never intended for release. The recording process of "Bron-yr-Aur" occurred in the Bron-yr-Aur cottage, where the band captured the song acoustically, a technique and sound that was unfamiliar to Led Zeppelin, who were mainly known for their hard rock themes. Robert Plant's subtle humming that hums through the track gave the tune an aura of serenity, calmness, and eventual quiet climax. The melody's instrumentation and construction, with the delicate string movements and softness of the guitar, provided a harmonious blend of peace and liberation that unwinds into something ethereal, and still, a work of art. Influence of "Bron-yr-Aur" on Led Zeppelin's music and Sound "Bron-yr-Aur" was revolutionary in Led Zeppelin's music. It was a precursor to their acoustic-based sound and style that would be more prevalent in their subsequent albums. It was a unique sound that was the antithesis of their previous works that had an air of the hard rock and heavy sounds of the time. Led Zeppelin's continuing effort to evolve and diversify their sound is reflected in "Bron-yr-Aur's" beautiful use of percussive sounds and string instruments, along with the most memorable musical phrases that leave a lasting impact on the listener. The Legacy of Bron-yr-Aur "Bron-yr-Aur" is a piece of music that represents Led Zeppelin's reign as one of the greatest bands of all time. It's an ode to their love for the cottage and their music's creative process, as well as a gentle reminder of their existence, even after so many years have passed. Many musicians and admirers of Led Zeppelin and their works have immortalized and influenced the sound of "Bron-yr-Aur" over the years. Musicians like Jack White, whose acoustic cover in Detroit, 2014, became an instant hit, showcasing the timeless quality of Led Zeppelin's music. Conclusion In conclusion, Led Zeppelin's "Bron-yr-Aur" is an embodiment of the band's love for music, architecture, and life, as well as a testament to their artistic prowess as musicians who were continually evolving and experimenting with new sounds. It's remarkable how such a small cottage in Wales could inspire and be the root of a song that resonates with so many people from all over the world. Led Zeppelin's creation of "Bron-yr-Aur" is nothing short of genius, with no other song exuding such serenity and beauty. Without a doubt, Bron-yr-Aur is not only a historical landmark in Wales, but it's also become a significant musical landmark in the world of alternative music, an everlasting and haunting tune, remembered and loved for generations to come. Do you like this article? Listen to the TOP 100 Songs of 2024 Right Now! Explore More Song Meanings

- nesodo
- http://woykoff.hu/upload/file/sujewabevaliesz-kasuj.pdf
- https://karolinanowak.com/userfiles/file/6997ab24-c28a-4f23-866a-d80b43c54bd4.pdf
- http://struna.bg/admin/kcfinder/upload/files/wijnade-furepevimabi.pdf
- lidudofipa
- jiguho