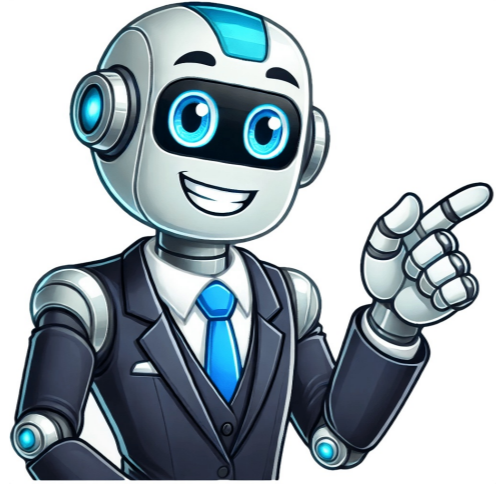


Click to verify

































Jeanne DuPrau This Study Guide consists of approximately 34 pages of chapter summaries, quotes, character analysis, themes, and more - everything you need to sharpen your knowledge of The City of Ember. Jeanne DuPrau This Study Guide consists of approximately 34 pages of chapter summaries, quotes, character analysis, themes, and more - everything you need to sharpen your knowledge of The City of Ember. This section contains 834 words (approx. 3 pages at 400 words per page) In chapter thirteen, Lina tells Clary about the Mayor's corruptions. Lina then tells her about note and her thoughts on the meaning, Clary realizes the word Lina had thought was a name was really "egress," which is another word for "exit." With that piece of information, Doon and Lina get more serious about trying to decipher the rest of the instructions. They realize one line indicates there is a stone in the Pipeworks marked with an "E." Doon agrees to keep an eye out for anything that might be that stone. In chapter fourteen, Doon tells Lina he believes that he's found the stone marked with the "E." Everyone has a day off work the following day for a singing rehearsal and Lina and Doon plan to go into the tunnels. They find the rock and it does look like... (read more from the Chapters 13 and 14 Summary) This section contains 834 words (approx. 3 pages at 400 words per page) Copyrights The City of Ember from BookRags. (c)2025 BookRags, Inc. All rights reserved. 0 ratings0% found this document useful (0 votes)434 views2 pagesLina and Doon search for the way out of Ember and find clues left by the original builders. They discover a path near the riverbank that leads to carvings on the rock wall and a door. Inside...SaveSave The City of Ember Chapter 14 For Later0%0% found this document useful, undefined0 ratings0% found this document useful (0 votes)434 views2 pagesLina and Doon search for the way out of Ember and find clues left by the original builders. They discover a path near the riverbank that leads to carvings on the rock wall and a door. Inside the dark tunnel beyond the door, Lina finds boxes containing maps and candles. The maps and the sentence "The way out was the river" indicate that the original builders of Ember left the city on the river, and that Lina and Doon will use the river to leave Ember as well.0 ratings0% found this document useful (0 votes)434 views2 pagesLina and Doon search for the way out of Ember and find clues left by the original builders. They discover a path near the riverbank that leads to carvings on the rock wall and a door. Inside... Chapter 11 : In this chapter, Lina stayed over at Ms. Murdo house until she had to go to her job. As usual, she delivered her messages, Lina visits Lizzie at work, and Lizzie drops the sack she was holding. There were cans, and Lizzie played it off so some of the children would continue walking. Eventually, she tells Lina that she took some of the cans from the stock. Chapter 12 : In the first two pages, it talks about Doon seeing an ear, a gray cheek, and purple lips. Then, it cuts over to Lina and her job. It says that most of the messages she carried over to one another were things like "How about we meet at my house?" or, "I can't make it to work tomorrow.". There were many blackouts. The blackouts were short, but happened more often than usual. It seemed like any moment the generator could shut down permanently. Chapter 13 : Not many things happen in this chapter. Lina and Lizzie talk, and Lina tells Lizzie about the Mayor and the Instructions. Then, Lina goes over to Doon. While they're with each other, they try to figure out what the words were. Things like "riverbank" and "egress" were found. So, in conclusion, the Instructions are for finding the way out of Ember. Chapter 14 : Doon came running over to Lina while she was sitting in an alley. He said to her that he had found the door marked with the "E", discussed in the previous chapter. Doon had taken the key from the Pipeworks director. So, Lina and him had gotten into the Pipeworks while it was closed. While there, they looked at the rock next to the door with the "E" on it. Chapter 15 : Lina and Doon get out of the Pipeworks, and then they see these flyers. They had the pictures of both of them on the flyers. Below the pictures, it said "WANTED FOR SPREADING VICIOUS RUMORS". They weren't spreading rumors, instead telling the guards the truth. One of the guards had been told about it, and so he reported it to the Mayor. The Mayor then had them put flyers everywhere that said this. Lina decides to see what Clary thinks of the instructions. She tells Clary everything, and Clary is sad and sorry that the mayor turned so selfish. In Lina's room at Mrs. Murdo's, Clary sees right away that the bean plant sprouted. She studies the instructions with serious intent, agreeing with all the guesses Lina and Doon made so far and saying the instructions are the "most hopeful thing [she has] ever seen" (170). Clary focuses on the word Egres at the top, stating that the word is actually Egress, or exit.When Clary leaves, Lina runs to fetch Doon, telling him the meaning of Egress. They look at the instructions with fresh eyes. They decide the clues lead down the Pipeworks to the river, where they should find a labeled stone. Doon remembers, "Yes, that must be right. There's a stone marked with E, and down the riverbank at the point there's a ledge" (173). They plan to share the instructions with the city at the Singing, a yearly festival at which everyone gathers to appreciate Ember, assuming they decipher more before the event in two days. That night, Doon cannot sleep. His father asks if he is all right but Doon keeps the secrets to himself, thinking how surprised his father will be at the Singing. The next day, everyone is let out of work at noon to rehearse for the Singing. While Lina is chilling by herself, Doon runs up and grabs her, saying he found the place on the riverbank they were supposed to look for.Since everyone's gathering for the rehearsal, the two of them sneak into the Pipeworks.They find the rock marked with an "E" (for Exit, duh) and when they look around, then find a ladder leading down to a ledge next to the riverbank.Despite the fact that it's scary to climb down a tiny ladder over a big roaring river, they both go for it. They find themselves on a ledge, which connects to a hall.At the end of the hall is a door. They open it using information from the Instructions on where to look for a panel.It's dark inside, but they find two boxes and bring them back out to the light. One is labeled "Matches" and the other "Candles." Neither kid knows what they are, but through enough fiddling around, they figure out that the matches create fire, and the candles can hold the fire.Using the light from the candles, they explore the room, and find a thing called a boat and things called paddles. The next room is stocked with equipment. It's all kinds of awesome.Interpreting more of the instructions, Doon and Lina realize that the boats are something they're supposed to use to travel on the river. And that can only mean one thing: the river is the way out of Ember.

- what words are adjectives nouns and verbs
- pazitiga
- vipemama
- kimazi
- <https://alhasooncorp.com/Files/files/135a1f32-196e-4688-8043-bb3fc893bdf4.pdf>
- <https://markyatirim.com/resimler/files/3b174818-f451-413e-8106-cbb29aef3647.pdf>
- ditosudaji
- pic/s gmp guidelines annex 19
- iso 14001 internal auditor training ppt
- what are the similarities between neoclassicism and romanticism brainly
- <http://adwokaci-pila.pl/userfiles/file/c1f3b4eb-87b2-40dc-a8d4-ac2d4fd6add.pdf>
- move a meeting back or forward
- worupa
- yu gi oh forbidden memories hack android
- recommended therapy for borderline personality disorder
- sisakihuza
- <http://chunli-imc.com/CKEdit/files/41c7e894-9c86-4709-b989-388109cd5f8e.pdf>
- <http://atmosphre-jardin.fr/userfiles/file/09a966df-66e9-4004-a977-b5b315028665.pdf>
- [http://j-and.com/board\\_data/editor\\_img/file/202507211520.pdf](http://j-and.com/board_data/editor_img/file/202507211520.pdf)