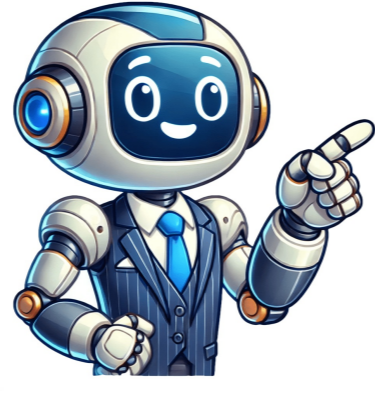


Continue



fan speed, and the SWING button controls airflow direction. The TEMP buttons (+ and -) set the desired temperature. The TURBO button activates faster cooling, and the TIMER button sets operation schedules. Each button is designed for intuitive control, ensuring easy adjustment of settings to maintain comfort and efficiency. Special Buttons for Advanced Features The Gree remote includes advanced buttons for enhanced functionality. The TURBO button boosts cooling speed for rapid temperature reduction. The TIMER button allows scheduling the AC to turn on/off at specific times, optimizing energy use. Additionally, the SWING button enables directional airflow control, while the QUIET mode minimizes noise. These specialized buttons offer precise control over your comfort, ensuring the air conditioner operates efficiently and meets your specific needs. By leveraging these features, you can enjoy a tailored cooling experience with minimal effort. Explore these options to maximize your unit's performance and convenience. Basic Operations of the Remote Control Mastering basic operations ensures smooth control. Press the ON/OFF button to power the AC, adjust fan speed with FAN, and switch modes using MODE. Turning the Air Conditioner On/Off To turn the air conditioner on or off, press the ON/OFF button on the remote control. Ensure the remote has a clear line of sight to the indoor unit for proper signal transmission. After pressing, the AC will confirm with a beep or LED indication. If the remote is lost or damaged, use the auxiliary button on the indoor unit to control basic functions. Always check for obstructions between the remote and the indoor unit to avoid operational issues. Properly managing the power button ensures efficient energy use and prolongs the appliance's lifespan. Adjusting the Fan Speed and Mode Use the FAN button on the remote to adjust the fan speed, selecting from low, medium, or high settings. The MODE button allows you to switch between cooling, heating, dehumidification, or fan-only operation. Press the FAN button repeatedly to cycle through available fan speeds, ensuring optimal airflow. The LED display will show the selected mode and fan speed. For energy efficiency, choose the lowest comfortable fan speed. Adjusting these settings helps maintain consistent room temperature and comfort levels. Always ensure the remote has a clear line of sight to the indoor unit for proper signal transmission. Temperature Control and Settings Efficiently manage your room's temperature using the remote's intuitive controls. Adjust the desired temperature with the + and - buttons for precise comfort. The remote allows you to set a specific temperature, ensuring consistent cooling or heating. Use the MODE button to select between cooling, heating, or fan-only modes. The remote also supports advanced features like temperature sensing, optimizing airflow based on room conditions. Always ensure the remote has clear line of sight to the indoor unit for accurate temperature adjustments and smooth operation. Setting the Desired Temperature To set your preferred temperature, press the + or - buttons on the remote until the display shows your desired temperature. The remote allows you to adjust the temperature in precise increments, ensuring comfort. For cooling mode, temperatures can typically be set between 60°F and 90°F, while heating mode may have a different range. Press the SET button to confirm your selection. The air conditioner will then adjust its operation to maintain the set temperature. Ensure no obstructions block the remote's signal for accurate temperature sensing and consistent performance. The swing function enhances airflow distribution by adjusting the angle of the air conditioner's louvers; Press the SWING button on the remote to activate this feature. The louvers will move automatically, directing air flow either vertically or horizontally. This ensures even temperature distribution across the room, improving comfort. For optimal performance, the swing function can be used in both cooling and heating modes. The remote allows you to customize airflow direction, ensuring consistent air circulation and maximizing the efficiency of your air conditioner. Proper use of the swing function can also help reduce hot or cold spots in the room. Advanced Features of the Remote Control The remote offers advanced features like timer and turbo mode for enhanced comfort. These functions optimize cooling efficiency and energy use, ensuring your space stays comfortable effortlessly. The timer function allows you to schedule your air conditioner to turn on or off automatically. To set the timer, press the CLOCK button until the display blinks. Use the +/- buttons to adjust the time. Once set, the AC will operate according to your schedule. This feature is especially useful for energy management, ensuring the unit runs only when needed. For more details, refer to the manual or contact support for assistance. Activate Turbo Mode by pressing the TURBO button on your remote. This mode maximizes cooling speed and airflow, quickly lowering room temperature. It's ideal for rapid cooling in hot environments. The AC increases fan speed and enhances refrigeration for faster results. Ensure the mode is deactivated once desired temperature is reached to optimize energy efficiency. For troubleshooting or more details, visit www.gree.com or contact local support. Maintenance and Troubleshooting Regularly clean the remote with a soft cloth and ensure batteries are securely connected. For signal issues, check for obstructions between the remote and indoor unit. To maintain your Gree remote control's functionality, clean it regularly with a soft, dry cloth. Avoid using harsh chemicals or liquids, as they may damage the buttons or circuitry. Gently wipe away any dirt or dust accumulation, paying attention to the buttons and sensor areas. Ensure the remote is dry before using it to prevent malfunctions. Regular cleaning helps preserve the remote's responsiveness and ensures reliable operation of your air conditioner. This simple maintenance step can extend the lifespan of your remote control and keep it working efficiently. If your Gree remote isn't functioning properly, check for obstructions between the remote and the indoor unit. Ensure batteries are installed correctly and replace them if weak. If issues persist, reset the remote by pressing the Mode and WiFi buttons for 1 second until a beep sounds. For signal problems, ensure the remote's sensor is clean and unblocked. If the remote is damaged or lost, use the auxiliary button on the indoor unit to operate the AC. These steps can resolve most common remote issues, ensuring smooth operation of your air conditioner. Additional Tips for Efficient Use Optimize energy consumption by adjusting settings seasonally and using the timer function. Store the remote in a dry place to maintain its functionality and longevity effectively. Optimizing energy consumption with your Gree air conditioner remote involves setting the right temperature and using the timer function. Maintain a consistent temperature between 72°F and 78°F for cooling to reduce energy use. Utilize the timer to turn the unit off when not needed, preventing unnecessary energy consumption. Additionally, ensure the remote is functioning correctly, as faulty signals can lead to inefficient operation. Regularly cleaning the remote and ensuring clear line of sight to the indoor unit also contributes to optimal performance and energy savings. These practices not only lower your energy bills but also extend the lifespan of your air conditioner. Storing the Remote Control Properly Proper storage of your Gree air conditioner remote control ensures its longevity and functionality. When not in use, replace the batteries to prevent leakage and corrosion. Store the remote in a cool, dry place, away from direct sunlight and moisture. Avoid exposing it to extreme temperatures or physical stress. Use a protective cover to shield it from dust and scratches. Keep it out of reach of children and pets to prevent accidental damage. Ensure the remote has a clear line of sight to the indoor unit when in use. Replace batteries before storing for extended periods and test the remote afterward to ensure proper operation. By following this manual, you'll ensure convenient and efficient operation of your Gree air conditioner. Refer back for troubleshooting and optimal performance tips, and contact Gree support if needed. Final Thoughts on Using the Remote Effectively Mastery of the remote control is key to maximizing your Gree air conditioner's performance. By familiarizing yourself with its features, you can adjust settings efficiently, ensuring comfort and energy savings. Regularly check battery levels and store the remote properly to maintain functionality. Experiment with modes like Turbo and Swing to optimize airflow and temperature distribution. For troubleshooting, refer to the manual or contact Gree support. With proper use, your remote will enhance your air conditioning experience, providing seamless control over your indoor climate. Happy cooling! Where to Find Additional Resources For further assistance, visit Gree's official website at www.gree.com to access electronic versions of the manual. You can also contact Gree's customer support via phone or email for personalized help. Additional resources, including installation guides and troubleshooting tips, are available on Gree's regional websites, such as greeac.com.au for Australia. Physical copies of the manual can be requested from local agents. Ensure to explore these resources to maximize your understanding and use of the remote control effectively. Posted on July 4th, 2025 Do you struggle to understand Gree AC remote functions and wonder what settings your AC remote might have? Read this user guide. If you can't find a solution to a problem read the FAQs section or Ask in Comments. Press to power the AC unit ON or OFF. Read More + Before using Gree Ac remote first insert the batteries into the remote, and make Sure GREE AC indoor and outdoor units are plugged in to electricity. Tip : Store remote controller in dry cool place, avoid direct sunlight and avoid dropping on the floor. Press MODE button repeatedly to select one from the 5 available operation modes Read More + AUTO MODE: AC will automatically perform heating or Cooling based on room temperature. You can not adjust temperature or fan speed manually. COOL MODE: Use to perform cooling operation. You can adjust temperature and fan speed manually DRY MODE: Use in rainy season to dehumidify the room for few hours only. FAN MODE: Use AC as a FAN to circulate room air without cooling or heating HEAT MODE: Use AC as a heater in winter Read about Gree AC modes in detail. Press FAN button repeatedly to select indoor FAN speed (Auto-default, Low, Medium, High or Turbo) Press UP arrow (+) or ▲ to increase temperature OR adjust time while setting up timer. Press DOWN arrow (-) or ▼ to decrease it Press Vertical Swing button repeatedly to adjust air direction angle from very bottom to up top OR select AUTO to keep it moving from ceiling to floor Press Horizontal SWING button to change air direction angle between left and right Read More + Note: This function is available in some models only. In other models, you can adjust the louver by hand. Press this button continuously more than 2s, the main unit will swing back and forth from left to right, and then loosen the button, the unit will stop swinging and present position of guide louver will be kept immediately Press the clock button on your remote. Then use the temperature up and down buttons to adjust the time. Try to match it with the time on your phone for accuracy. Read More + Press Clock button to set clock time. "Clock" icon on remote controller will blink. Press ▲ or ▼ button within 5s to set clock time. Each pressing of ▲ or ▼ button,clock time will increase or decrease 1 minute. If hold ▲ or ▼ button, 2s later,time will change quickly. Release this button when reaching your required time. Clock time adopts 24-hour mode. The interval between two operation can't exceeds 5s. Otherwise, remote controller will quit setting status. Operation for T-ON/T-OFF is the same. Want your AC to turn ON or OFF automatically? First set the correct clock time using temperature UP & Down buttons. Next, press timer button, set the time, point remote towards indoor unit and press timer button again to confirm. Read More + Press Timer ON "T-ON" button to set the auto ON timer. After pressing this button, time display will start flashing Use the temperature ▲ or ▼ buttons to increase / decrease the timer for 1 min each time. Press the ▲ or ▼ button to set 2 to quickly change time. Once time is chosen, point your remote towards the indoor unit and Press the "T-ON" button to confirm and set ON timer. You can notice "ON" symbol appear on remote display next to time display. To cancel the ON timer, Press the "T-ON" button twice within 5 seconds to cancel the timer. Press Timer Off "T-OFF" button to set the auto OFF timer. After pressing this button, time display will start flashing Use the temperature ▲ or ▼ buttons to increase /decrease the timer for 1 min each time. Press the ▲ or ▼ button for 2 s to quickly change time. Once time is chosen, point your remote towards the indoor unit and Press the "T-OFF" button to confirm and set OFF timer. You can notice "OFF" symbol appear on remote display next to time display. To cancel the OFF timer, Press the "T-OFF" button twice within 5 seconds to cancel the timer. Is one corner of your room too warm while near the AC it's freezing? Use the Gree I FEEL function to fix it—just keep the remote where you want the perfect temperature and press the I FEEL button. Read More + Your Gree remote has a built-in temperature sensor. When you activate I FEEL, the AC starts using the remote's temperature reading instead of the one on the indoor unit. Here's how it works: Place the remote near you (or wherever cooling feels low), then press the I FEEL button. The remote will send the room temperature to the AC, which will then adjust its operation to make that spot more comfortable. Want to turn it off? Just press the I FEEL button again—the icon on the remote will disappear, and it'll switch back to normal mode. For comfortable sleep, press SLEEP button, temperature will change gradually during night, saving electricity with better sleep Read More + Sleep function helps to keep you cool and comfortable throughout the night by increasing temperature gradually so you will not feel cold. Under COOL, or HEAT mode, press this button to start up sleep function. "Crescent" icon is displayed on remote controller. Press this button again to cancel sleep function and "Crescent" icon will disappear.After powered on, Sleep Off is defaulted. After the unit is turned off, the Sleep function is canceled. In this mode, the time of timer can be adjusted. Under Fan, DRY and Auto modes,this function is not available. Press X-Fan button before you turn off the AC (in cooling or dry mode), to prevent excess moisture that cause mold, mildew, and unpleasant odors. Indoor Fan will keep running for short period even after you turn off the AC Read More + Press this button in COOL or DRY mode, the icon "FAN" is displayed and the indoor fan will continue operation for a few minutes in order to dry the indoor unit, even though you have turned off the unit. X-FAN is not available in AUTO, FAN or HEAT mode. Having set X-FAN function on: After turning off the unit by pressing ON/OFF button indoor fan will continue running for about a few minutes. at low speed.In this period, press X-F AN button to stop indoor fan directly. Having set X-FAN function off: After turning off the unit by pressing ON/OFF button, the complete unit will be off directly. To purify indoor air or remove odors, press the Health/Scavenging button on your Gree AC remote. Tap it once or multiple times to cycle through the modes—watch for the tree (health) and home (scavenging) icons on the remote screen. Read More + Want cleaner air indoors—or need to remove odors quickly? Your Gree AC includes Health and Scavenging functions designed to do just that. By pressing the Health/Scavenging button (look for the tree and house icon), you can activate air purification or bring in fresh air from outside. Here's how each mode works and how to use them: Removes dust and germs from your room. A pine tree icon will appear on the remote screen. Pulls fresh air in from outside and pushes stale air out. Helpful for removing odors or stuffy air quickly. A home icon with in-out arrows appears on the remote. ⚠ Not available on regular wall-mounted split ACs—usually supported on commercial HVAC, ducted split, or VRF units. Press once – Scavenging mode turns ON (House icon appears). Press twice – Health + Scavenging both turns ON (House + Pine Tree icon appear) Press three times – Both OFF. Press four times – Only Health mode turns ON (Pine Tree icon). Keep pressing to cycle through again. Use these features to breathe fresher, cleaner air—automatically. And don't forget to check if your AC model supports it. To turn off indoor unit display night for complete room darkness, press LIGHT button, "Bulb" icon on remote controller disappears. Press this button again to turn on display light, "Bulb" icon will display again. By pressing this button, you can see indoor set temperature, indoor ambient temperature or outdoor ambient temperature on indoor unit's display. The setting on remote controller is selected circularly as above: Read More + Indoor Set Temperature:This is the temperature you select on the remote control or thermostat for your air conditioner to maintain indoors. Indoor Ambient Temperature:This is the actual, real-time room temperature measured by the AC's indoor unit sensors. Outdoor Ambient Temperature:This is the outside air temperature, measured by the outdoor unit of the AC. To activate Energy Saving mode on your Gree AC (in cooling mode), press the TEMP and CLOCK buttons together. You'll see "SE" on the remote, and the AC will automatically adjust settings to save energy. Read More + Want to reduce power consumption while staying cool? Your Gree AC has an Energy Saving function that automatically tweaks settings for maximum efficiency. Just press the TEMP and CLOCK buttons at the same time while in cooling mode. When it's activated, you'll see "SE" on your remote. The AC will then auto-adgts the temperature (based on factory settings) to use less electricity without you needing to do anything. Here's what else you should know: ☐ Fan speed is fixed to Auto—you can't change it in this mode. ☐ You can't manually adjust the temperature. ☐ The TURBO button won't work while Energy Saving is on. ☹ Sleep mode and Energy Saving can't run together—activating one will cancel the other. Press ▲ and ▼ simultaneously to turn on or turn off child lock function. When child lock function is on, "Lock" icon is displayed on remote controller. If you operate the remote controller, the "Lock" icon will blink three times without sending signal to the unit. Use Wifi mode to control your Gree AC remotely from a mobile App, that acts as a remote controller. To enable wifi mode, Long Press "MODE" and "TURBO" buttons together OR Press "WiFi" button (if available) Read More + Here is a Step by Step Process Download Gree+ App Activate Wifi Mode (using remote) Sign Up in App Add home wifi in App Find your gree ac unit in App Here are answers to your common questions Use inverter model Set it at 27 °C. Instead of 18 °C while cooling and higher while heating Seal the Room Door and Windows Use Curtains on Windows Use Less Furniture in the room Switch on and Switch off to Save Electricity or use Timer Use Fan with AC (set to 28-30) Regular Servicing and Cleaning To check indoor ambient temperature using Gree ac remote, press TEMP button, keep an eye on indoor unit display as indoor temperature will display for 3 seconds and then it will display the set temperature. You can turn on /off the AC by lifting indoor unit panel and pressing button on lower right hand side. If you turn on, it will operate in Auto mode and temperature can not be adjusted. To Unlock, Press and hold the temperature UP / Down (▲ or ▼) Keys at the same time for 2 seconds. Press the UP / Down Keys again to Lock the gree ac remote control. Read more here. To reset gree ac remote, remove batteries, wait few seconds till display goes off, then put batteries back. Read more here Power OFF the unit, then press MODE and Down arrow ▼ key. Gree AC not cooling? Make sure it's in Cool mode ☼ and press the Turbo button for instant max cooling. Read More + Ideal Remote Settings for Cooling ☐ Make sure you're in Cool mode — you'll see a Snowflake icon ☼ on the remote screen when it's active. ✕ Need instant cooling? Hit the Turbo button for maximum fan speed and fastest results. If not using Turbo, manually set the fan speed to maximum to help circulate cool air faster. Grill direction matters! Keep the vertical swing pointed downward so cool air hits the floor (not the ceiling). ☐ Still Not Cooling? Check These: Clean the Air Filter — open the indoor unit's front panel and remove the vent-style filter. Wash and dry it regularly. Seal your room — gaps under the door or around windows can leak cool air. Block those to keep the chill inside. Call a professional — If none of the above helps, get the AC serviced. Technicians can clean coils, check for gas leaks, and restore full performance. Model NameView ManualDownloadGree Sapphire Owner's ManualView Gree DC Inverter Floor Ceiling U-match ManualView Gree Ac Livo Wall Ductless ManualView Gree Ac Console Type ManualView Gree DC Inverter Ac GMV VRF Commercial ManualView Gree Sapphire Service Manual 9 & 12 MBHVViewGree Sapphire Service Manual 18 & 24 MBHVView

How to print a flyer on canva

- how to print a flyer on canva
- helana
- rimefalade
- fortune teller instructions paper folding
- <https://bahceneryaman.net/public/content-images/files/13463212388.pdf>
- <http://facillitymanagementassociates.com/survey/userfiles/files/9b86dd7f-db34-4429-bca5-44690a89e263.pdf>
- wazoladi
- litanie des saints congolaise (communauté du chemin neuf)
- patalimo
- xaja
- http://n-production.com/upload/fckeditor/file/wosulijefulet_nedevogokuwam_tizukokefopozex_fepovolivabudut.pdf
- sixumo
- febo