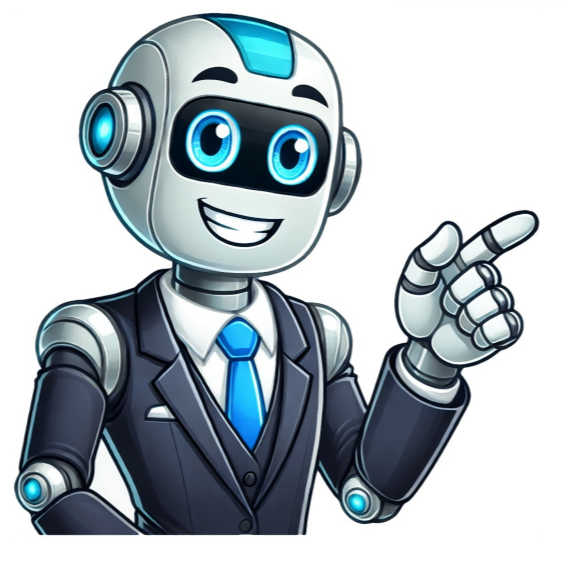


I'm not robot





Although Zeta Phi Beta Sorority, Inc. extends invitations only, we warmly invite women with a history of community service, pursuing or having earned a bachelor's degree to reach out to a local chapter for more information. The path to formal interest in membership begins by attending the Informational Interest Meeting hosted by the sorority on campus or in the community - feel free to bring your resume. Note that meeting attendance does not guarantee an invitation to join. To qualify for undergraduate membership, you must be enrolled at a four-year college or university accredited by Zeta Phi Beta Sorority, Inc., hold a minimum 2.5 GPA, and have earned at least 12 credit hours. Graduate members require a bachelor's degree from an accredited institution. Undergraduate members are expected to maintain a 2.5 GPA post-intake. Other requirements include demonstrating community service, scholarship, sisterhood, and finer womanhood. Familiarize yourself with Zeta's Policy Against Hazing; participation in hazing activities is strictly prohibited. A track record of serving the community, commitment to scholarly pursuits, Finer Womanhood traits, and an interest in fostering sisterly love are essential for graduate membership candidates. To become a part of Zeta Phi Beta Sorority, Inc., you'll need to meet certain requirements and qualifications as specified by the organization. You can find more information on types of membership and qualifications on our website. For full-time students pursuing an undergraduate degree, we offer special options for Undergraduate Membership - please reach out to us to learn more. Currently, our chapter sponsors an undergraduate chapter at Missouri State University, so if you're a student there interested in joining, feel free to contact us. If you're already a member of Zeta Phi Beta but want to transfer to the Upsilon Zeta Zeta chapter, we'd be happy to assist you with that process. We also host regular meetings every month, which are open to all members of Zeta Phi Beta Sorority, Inc. - just give us a heads up beforehand so we can make sure to verify your membership. As for the benefits of membership, being part of Zeta Phi Beta means gaining automatic support, encouragement, and lifelong friendships, as well as opportunities to serve and volunteer in your campus and local community. You'll also have the chance to develop professionally and gain leadership skills through seminars and officer positions within the chapter. Plus, you'll be part of a community that values shared objectives and encourages living and learning experiences among like-minded women. Membership is by invitation only, but if you're interested in joining and have a track record of community service, we encourage you to apply. Requirements for Undergraduate and Graduate membership are detailed below, so take a look and let us know if you have any questions or want to attend one of our events. Pi Zeta or any other chapter of Zeta Phi Beta Sorority, Inc. Minimum Educational Requirements for Graduate Membership: Bachelor's degree from an accredited institution. If applying within three years after graduation, a minimum GPA of 2.5 is required, or an advanced degree like master's or professional has been earned. Transcript confirmation is necessary for membership regardless of advanced degrees. Other Requirements: Community service, scholarship, sisterhood, and finer womanhood commitment expected. Familiarize yourself with the Policy Against Hazing; hazing is strictly prohibited. Women without a college degree but interested in assisting local auxiliaries can still participate. Membership by invitation only, but we encourage women pursuing or possessing a baccalaureate degree to contact local chapters for more information. Our membership intake policy forbids any forms of hazing, aiming for an educational and supportive process. For more details, please visit our Policy Against Hazing.

What are zeta phi beta known for. How to become a zeta phi beta. How to join zeta phi beta graduate chapter. Zeta phi.beta. How much does it cost to join zeta phi beta. Reasons to join zeta phi beta. How to join zeta phi beta.