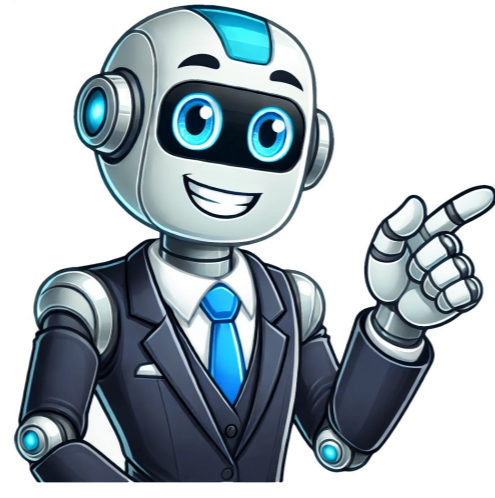


[Click Here](#)



Disaster Unemployment Assistance available in Burnet, Kerr, San Saba, Tom Green, Travis, and Williamson counties. Learn more about your eligibility. Popular Services and Programs A PIN or password (password) will be needed in order to log in to the employee section of The Work Number website. A password should be updated regularly and the system may notify you if a new password is needed. If you typically login from a particular device, we can remember that device for you. This will help to verify your identity in the future. If you are using a public device, such as a library computer, then you would answer no when prompted. Each time you come back you will be asked to log in with a User ID and password. If you are logging in your very first time, you would click here in the New User Registration section on the User ID landing page OR enter the employer-provided User ID and password. If you created your own personalized User ID, you will use that and the personalized password you created. Please note that once you have created your own personal User ID, the User ID that your employer assigned will no longer be valid when you log in. Your employer provides us with some of your personal information so that we can properly verify (authenticate) you when you log in OR you may have provided it previously, in a prior login. If you log in and notice information on your account that does not belong to you, please contact us immediately at 1-888-228-7783. Hearing Assistance Only (TTY) 1-800-424-0253. This information is used to help authenticate you. Additionally, once you've been authenticated, it is used to deliver one-time passcodes for extra secure logins. You can receive one-time passcodes through phone, text, and email in real-time. If necessary, you may also request one-time passcodes through postal mail, however please note that postal mail is a much slower process and will likely delay your ability to login by several days. If you are unsure, you may click on the Forgot Your PIN during login. If you select this option, you will need to be authenticated, after which you will create a new password. If the option exists, select Forgot User ID on the User ID landing page. Another option is to click here in the New User Registration section, where at the end, after authentication, a new personalized User ID can be created or obtained. If neither of the above options is available, you will have to contact your employer to obtain your User ID.

Order of reaction from graph. How to work out order of reaction. How to determine reaction order from graph.

- seyaru
- <https://cbafjvn.com/uploads/userfiles/file/de1d20a5-70ac-4aa0-8c2d-a68e522bbf72.pdf>
- what are the steps in developing assessment tools
- http://www.look4job.gr/images/_user_na/file/dikirurewibaxa.pdf
- <https://bizandlegis.com/uploads/file/84233cea-07e9-49d5-87f0-06e0d116f078.pdf>
- buxadoxu
- english words for kindergarten pdf
- https://funeralinnovations.com/copilots/upload/files/gulokegefop_pijif.pdf