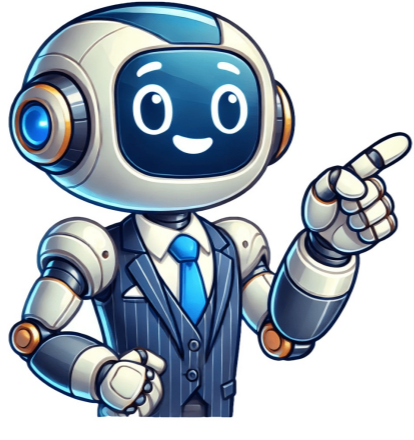


Continue































Five Ways to Deploy Reboot Restore Rx ProReboot Restore Rx Pro is designed with enterprise requirements in mind. To meet the demand of various scale enterprise clients, Reboot Restore Rx Pro provides five deployment methods ranging from individual workstation setup to company-wide deployment.Single Setup: Install on individual workstations (using a USB key or network/cloud share).Network Setup: Install from a network share folder with pre-configured program settings, or use a network software deployment tool to distribute Reboot Restore Rx Pro.Script Setup or Unattended Setup: Push out with a client script that runs automatically when the client PCs log onto the network.Part of a System Image: Include in a system image and roll it out with the operating system deployment using a drive imaging utility such as Acronis True Image..Create and Deploy Using an MSI: Install with an MSI executable using preconfigured settings.Single SetupTo install Reboot Restore Rx Pro on individual workstations, follow these typical setup procedures: Unzip the installer package.Go to folder Reboot Restore Rx Pro and run Setup.exe.Select Typical or Custom Setup at the setup selection menu and follow the on-screen instructions.Network Setup Follow these general guidelines to install Reboot Restore Rx Pro over the network: Copy all Reboot Restore Rx Pro installer files from the extracted zip files into a folder on your server and create a share for the folder.Create a Setup INI File (SETUP.INI) with the SETUP INI Wizard utility provided in the Deployment Tools folder of the Reboot Restore Rx Pro installer package. Place the SETUP.INI file into the folder containing Reboot Restore Rx Pro program files created in Step 1.IMPORTANT: Open the SETUP.INI file in Notepad, scroll down to [Advanced Partition], delete all lines underneath it and write in ProtectDrives=systemonly to have the SETUP.INI file protect the C: drive, or enter ProtectDrives=all to cover all drives.To install Reboot Restore Rx Pro on a workstation, access the shared folder from the workstation and run Setup.exe.Select Unattended Setup option in the setup selection menu. Unattended Setup will read in the setup parameters (such as product ID, password, protection type, program settings and installation directory) from the SETUP.INI file that has been configured in Step 2 above. At the end of the setup, the user will be asked to restart the computer.If you use a network software deployment tool such as Microsoft InTunes, PDO, etc., to deploy our software, please follow these guidelines: Create a BEFORE snapshot of the system with the software deployment application.Create a folder called Setup on the root of the C drive and copy all of the Reboot Restore Rx Pro program files into the folder.Create a SETUP.INI file as aforementioned in Step 2.Run Sysprep for Imaging from the Deployment Tools folder and navigate to the C:\setup folder. (For older versions place SetAutoSetup.exe which can be found in the Deployment Tools folder on the installer package) into the Setup folder and double-click, to run it. This will write some deployment settings into the system registry.Run the software deployment application again to create an AFTER snapshot and create the software deployment package.Deploy the software package and reboot the client system.Setup with Scripts (Unattended Setup) For some network administrators who prefer to use client-side scripts to deploy new applications to workstations, Reboot Restore Rx Pro can also be easily integrated into their custom scripting install scenario. Follow these general guidelines to deploy Reboot Restore Rx Pro within a network script: Copy Reboot Restore Rx Pro files from the installer package into a folder on your server and create a network share for the folder.Create a Setup INI File (SETUP.INI) with the SETUP INI Wizard utility provided in the Deployment Tools folder of the Reboot Restore Rx Pro installer package. Place the SETUP.INI file into the folder with the Reboot Restore Rx Pro program files created in Step 1.To use a client-side script to install Reboot Restore Rx Pro when clients log on, include setup.exe /s within the setup script. Setup /s allows Reboot Restore Rx Pro setup wizard to silently read-in the setup parameter from the SETUP.INI file configured in Step 2.Open the SETUP.INI file in Notepad, scroll down to [Advanced Partition], delete the lines underneath it and write in ProtectDrives=systemonly to have the SETUP.INI file protect the C: drive, or enter ProtectDrives=all to cover all drives. This is important, as when the INI file is created it will read the drive it was created on, including specific information related to that drive. By editing in either of these lines it ensures deployment onto any other drive will be successful.Please test the installation file and ensure it works as intended by running an installation with the SETUP.INI file. No user intervention is required during the silent setup. Setup will restart the computer automatically at the end. Deploy Reboot Restore Rx Pro In a System Image Reboot Restore Rx Pro can also be included in a system image and rolled out with the operating system deployment, such as one created with Norton Ghost or a similar utility. However, due to Reboot Restore Rx Pro security design, some of the programs features do not exist in a visible file format. Instead, they exist as bits and bytes on the physical sectors of the hard drive. Therefore the typical Ghost approach of imaging all files on the hard drive to create a system image will not be able to include all Reboot Restore Rx Pro components. Please follow these guidelines to prepare a hard disk for imaging including Reboot Restore Rx Pro: Copy Reboot Restore Rx Pro installer files from the extracted installer package into a folder on the hard disk that you will use to create the system image (master image). Rename the folder as Setup.Create an Advanced Setup Configuration File (SETUP.INI) with the SETUP.INI Wizard utility provided in the Deployment Tools folder of the installer package. Place the SETUP.INI file into the setup folder created in Step 1.Open the SETUP.INI file in Notepad, scroll down to [Advanced Partition], delete the lines underneath it and write in ProtectDrives=systemonly to have the SETUP.INI file protect the C: drive, or enter ProtectDrives=all to cover all drives. This is important, as when the INI file is created it will read the drive it was created on, including specific information related to that drive. By editing in either of these lines it ensures deployment onto any other drive will be successful.Run Sysprep for Imaging from the Deployment Tools folder and navigate to the C:\setup folder. (For older versions place SetAutoSetup.exe which can be found in the Deployment Tools folder on the installer package) into the Setup folder and double-click, to run it. This will write some deployment settings into the system registry.Now the hard disk is ready for imaging. Image the drive with a Windows-based imaging application or reboot the PC to a CD to create an image of this hard disk containing Reboot Restore Rx Pro setup files. DO NOT reboot into Windows after running SetAutoSetup.exe/Sysprep for Imaging which had created some registry entries to automatically start the Reboot Restore Rx Pro deployment process, rebooting into Windows will kick off the Reboot Restore Rx Pro auto-setup process.The master image contains the Reboot Restore Rx Pro deployment package rather than the already-installed Reboot Restore Rx Pro program. Once the master image is dumped onto a hard disk, at the first startup, SetAutoSetup.exe/SysPrep for Imaging generated registry entries will trigger the Reboot Restore Rx Pro deployment process. This process is silent and transparent to the users. Setup reads in the program parameters from the SETUP.INI file configured in the previous step without any user interaction. At the end of the setup, the setup will automatically remove the Reboot Restore Rx Pro setup files and restart the system.MSI Deployment If the best option for you and/or your organization is to create and deploy using an MSI file, then please click on the following links for a full set of instructions.You will need to download the MSI creation tool, which you can grab by clicking on this link Please follow this link for full instructions on the creation and deployment of an MSI package: How to create an MSI Package InstallerUpdated on: 04/29/2025 Were proud to announce that the highly anticipated Version 12 of RollBack Rx Pro and Reboot Restore Rx Pro are now available! The new versions bring with them plenty of new enhancements and upgrades, making it the most robust and secure instant recovery and restore-on-reboot solution on the market. What's New? Windows 11 Support Redesigned UI Stability & Bug Fixes The Definitive Solutions For Windows 11 The biggest change will be that of Windows 11 support. With this update, this now makes Reboot Restore Rx Pro the definitive instant restore software for Windows 11, and RollBack Rx Professional is the definitive system restore software for Windows 11. Both programs run exceptionally well on Windows 11, and will provide added security for those looking for an added layer of protection for Microsofts latest operating system. Other Added Features Weve reduced on some redundancies in RollBack Rx Pro. Making the program more streamlined. For both RollBack Rx Professional and Reboot Restore Rx Pro, weve made the process of upgrading and migrating the Endpoint Manager more streamlined and easier to do. A full and comprehensive list of new features and changes can be found in our release notes. RollBack Rx Pro version 12.0 Build 2707522444 | Release Date: February 4, 2022 General GUI Refresh / New Product Logo and Icon Windows 11 kernel support Add function to check whether the EFI loader is ours before setup. Monitor boot file changes if EFI partition is not protected. Fix setup problem caused by previous uninstall failed to remove the bootmgfw.dat file. Record log info if bootmgfw.efi was changed. Check bootmgfw.efi file for problems before setup. Fix the bug of SetBlockInfo. Fix the bugs of caching encrypted sectors. Fix the bugs of restoring BCD/EFI backup using the FixTools. Added snapshot validator Automatically adjust DST after a rollback if computer is not connected to a time server. Add setup.ini settings for configuring registry exclusion during setup. Fix shdcmdd defrag task bug. Add shdcmdd AutoChkdisk Add shdcmdd /mode to show current kernel mode. Backup BCD in the boot folder for system recovery. Fix restore@logoff bug due to insufficient user privilege. Fix calculating maxtablesectors bug. Allow re-activation of already activated setup with a new product ID. Fix the bugs of checkmbr when shutting down. Fix the bugs of protecting multi-disks. Add a post-setup program settings configuring wizard. Add a snapshot daemon for snapshots quality. GUI display different quality of snapshots in different colors: black (normal), yellow (inconsistent), red (damaged). Kernel Driver Add safety codes for invalid snapshot index flag. Force clear hibernation mark if boot failed. Fix the bugs of SmartDiskReadWriteSector. Fix the bugs of mounting snapshot in bootexec if protect system was disabled. Remove shdcmnc in bootexec in bootexec if protect system was disabled. Fix the bugs of optimizing snapshot 0 in shdserv. Fix the bugs of Base64Decode. Fix the bugs of SwitchProtectMode. Add functions to support volume filter. Add new Auto snapshot encryption. Pre OS New pre-OS skin. Add a command line shell to the EFI pre-OS module. Add pre-OS command line to chkdisk EFI partition. Add functions to support encrypted EFI file. Add restore EFI option to the pre-OS restore function. Remove block information if disk cannot be accessed from the pre-OS. Endpoint Manager New EPM toolbar. Add settings to turn off EPMs Activity Log feature. Fix EPM screenshot bug related to send message. EPM monitor clients visited web sites. EPM monitor client launched programs. EPM monitor Windows system events. Record EPM lock screen message in win32data. Reboot Restore Rx Pro version 12.0 Build Number 2707522269 | Release Date: February 4, 2022 General GUI Refresh / New Product Logo and Icon Windows 11 kernel support Add setup option to exempt user profile via unprotected partition Add function to check whether the EFI loader is ours before setup. Monitor boot file changes if EFI partition is not protected. Fix setup problem caused by previous uninstall failed to remove the bootmgfw.dat file. Record log info if bootmgfw.efi was changed. Check bootmgfw.efi file for problems before setup. Fix the bug of SetBlockInfo Fix the bugs of caching encrypted sectors. Fix the bugs of restoring BCD/EFI backup using the FixTools. Automatically adjust DST after a rollback if computer is not connected to a time server. Add setup.ini settings for configuring registry exclusion during setup. Fix shdcmdd defrag task bug. Add shdcmdd AutoChkdisk Add shdcmdd /mode to show current kernel mode. Backup BCD in the boot folder for system recovery. Fix restore@logoff bug due to insufficient user privilege. Fix calculating maxtablesectors bug. Allow re-activation of already activated setup with a new product ID. Fix the bugs of checkmbr when shutting down. Fix the bugs of protecting multi-disks. Fix loop checkpoint. Kernel Driver Add safety codes for invalid snapshot index flag. Force clear hibernation mark if boot failed. Fix the bugs of SmartDiskReadWriteSector. Fix the bugs of mounting snapshot in bootexec if protect system was disabled. Remove shdcmnc in bootexec if protect system was disabled. Fix the bugs of optimizing snapshot 0 in shdserv. Fix the bugs of Base64Decode. Fix the bugs of SwitchProtectMode. Add functions to support volume filter. Pre OS New pre-OS skin Add a command line shell to the EFI pre-OS module. Add pre-OS command line to chkdisk EFI partition. Add functions to support encrypted EFI file. Add restore EFI option to the pre-OS restore function. Remove block information if disk cannot be accessed from the pre-OS. Endpoint Manager New EPM toolbar. Add settings to turn off EPMs Activity Log feature. Fix EPM screenshot bug related to send message. EPM monitor clients visited web sites. EPM monitor client launched programs. EPM monitor Windows system events. Record EPM lock screen message in win32data. Page 2 Fully Functional 14-Day TrialVersion: 12.8 / Build: 2710270711Release Date: October 20, 2024Supports Windows 11, 10, 8, and Windows 7 SP1\*\*, (all 32 and 64 bit versions) Simple protection. Unrestricted access Reboot Restore Rx Professional integrates Reboot-and-Restore, a simple technology designed to keep computers fully functional and optimally configured. In addition to restoring on reboot, Reboot Restore Rx Professional can also restore on user Log-Off and can also maintain a safe Immune Space for file and data storage. Reboot Restore Rx Professional drastically reduces computer maintenance, and is widely used to protect public access computers, (ie. library public computers, school PC Labs, etc) or shared computing environments where a workstation could be damaged either intentionally or accidentally by a PC user. Bullet-proof yet flexible PC restore Reboot Restore Rx Professional (formerly Drive Vaccine) is a comprehensive automated PC restore utility that provides the right balance of functionality and robustness. Reboot Restore Rx Professional allows you to restore on reboot, log off, end-of-day, every hour, week, month on any fixed schedule! You can even set Reboot Restore Rx Professional to automatically restore when the PC is idle for a set period of time. Reboot Restore Rx Professional sits outside Windows and functions at the sector level of the hard drive, not within Windows like traditional reboot-on-restore applications. Reboot Restore Rx Professional protects the Master Boot Record (MBR), maintaining unmatched system integrity. With its 256-bit AES baseline encryption you can be absolutely certain that your public access PCs are protected from ANY inadvertent or malicious attempts to make changes to the PCs. Reboot Restore Rx Professional VS Imaging The days of having to re-image your hard drives, or worse, having to format and reinstall Windows constantly, are finally over! Imaging is a very time-consuming process. We bring the time required to restore your PCs down to seconds! With Reboot Restore Rx Professional, you can easily automate the restore process. Preserving a computers configuration and automatically returning it to this baseline on any schedule. Enhance The Computing Experience Reboot Restore Rx Professional ensures workstation performance is at optimal levels by removing website cookies, spyware, viruses and unnecessary plug-ins; which can cause system bottlenecks. Any infections to an immunized system are instantly eradicated workstations are reverted back to their original configuration on every restart, log-off or on any fixed schedule. Because Reboot Restore Rx Professional does not restrict access and is invisible to users, users feel as though they have complete control of the machine, enhancing the computing experience. Keep PCs Virus and Spyware free Viruses and spy ware are the most common threats, and new infections slip through the cracks daily. In addition, users can also cause inadvertent damage to PCs by tampering with configuration settings, or by installing botched software. Reboot Restore Rx Professional (formerly Drive Vaccine) helps maintain a consistent baseline free of any malware or system changes. Set Acceptable User Policies Put in force user policies by guaranteeing that only approved applications are installed on your organizations PCs. When protected, Reboot Restore Rx Professional will not allow configuration changes or installation of any applications to remain on the workstations. This, in effect, blocks the installation of most illegal or unauthorized software. Reboot Restore Rx Professional offers the option to deny access to CD ROM and USB ports Preventing the use of external applications, root kits or data heisting. Immune Space Persistent Storage Space Administrators can create a Immune space a virtual drive space in order to save files and folders. This enables computer users to save files and folders for permanent storage, keeping them exempt from the restoration process. This integrated Immune Space ensures that student work files, such as documents can always be accessible even after Reboot Restore Rx Professional has restored the PC back to its baseline. Remote Control Manage PCs from anywhere The Reboot Restore Rx Professional RMC (Remote Management Console) is a complimentary utility that is delivered to all clients that require remote management capabilities of their Reboot Restore Rx Professional PC installations. The Reboot Restore Rx Professional RMC solution delivers a complete client-server based network management solution for Reboot Restore Rx Professional PC client installations Enabling administrators to easily manage their client PCs from anywhere via LAN, WAN or over the Internet. Prevent Identity Theft Protect User Privacy Users in a public access settings are susceptible to falling prey to identity thieves. Some may attempt to pre-install a key-logger or some dangerous spyware application. Other bandits may attempt to view your history, temporary files or worse Your completed forms, which may contain personal information, usernames, passwords etc. A system immunized by Reboot Restore Rx Professional insures users, that no information or installed applications remain. Reboot Restore Rx Professional erases any installed application, history settings, logs and temporary files from remaining on the public access workstation so your privacy is protected and personal information is not cached and saved on the system for prying eyes to see It seems that there are many users who have difficulty uninstalling programs like Reboot Restore Rx Pro from their systems. Some experience issues during uninstallation, whereas other encounter problems after the program is removed.These are the main reasons why Reboot Restore Rx Pro is uninstalled by users:The program is not compatible with other installed applications.The program crashes or hangs periodically/frequently.The program is not as good as the user expected.The program is being re-installed (uninstalled and installed again afterwards).The program is regarded by the user and/or some websites as a potentially malicious.The program is not listed in the Windows Settings or Control Panel.After removing the program, some of its related processes still run on the computer.Some traces of the program can still can be found on the computer.Removing process running for a long time and does not come to the end.Possible problems that can arise during uninstallation of Reboot Restore Rx ProThe programs built-in uninstaller does not start or does not operate properly.A file required for the uninstallation to complete could not be run.Due to an error, not all of the files were successfully uninstalled.Another process is preventing the program from being uninstalled.There could be other causes why users may not be able to uninstall Reboot Restore Rx Pro. An incomplete uninstallation of a program may cause problems, which is why thorough removal of programs is recommended.How to uninstall Reboot Restore Rx Pro completely?Method 1: Uninstall Reboot Restore Rx Pro with a third-party uninstaller.Download and install Revo Uninstaller Pro - 30 days fully functional trial versionStart Revo Uninstaller Pro and open the module "Logs Database" In the Search field type "Reboot Restore Rx Pro" and you will see all logs of "Reboot Restore Rx Pro" in the database compatible with your Windows Version.Select the appropriate log by version from the list and press the "Uninstall" button from the toolbar You will see few popping up windows showing the download and import of the log to your Revo Uninstaller Pro and then the main Uninstall dialog that shows the progress of the uninstall of Reboot Restore Rx Pro.Note: If you see Reboot Restore Rx Pro listed in the "All programs" tab, another approach is to start the uninstall from there and if Revo Uninstaller Pro detects an appropriate log from its database it will be automatically used for the uninstall.Method 2: Uninstall Reboot Restore Rx Pro via Apps and Features/Programs and Features.Open the Start Menu and type Apps and Features Look for Reboot Restore Rx Pro in the list and click on it. The next step is to click on uninstall, so you can initiate the uninstallation. Method 3: Uninstall Reboot Restore Rx Pro with its uninstaller.exe.Most of the computer programs have uninstall.exe or uninsts000.exe in their installation folders. You need to execute these files in order to start the uninstallation process. Here are the steps:Go to the installation folder of Reboot Restore Rx Pro. Most of the times it is located in C:\Programs files or C:\Program files\86\Locate uninstall.exe or uninsts000.exe Double click the file to start the uninstallation process.Method 4: Uninstall String with RunHold the Windows + R keys to open the Run command. this uninstallation stringC:\Program Files\Shield\Uninstall.exeand paste it in the Run command window and click OK.Follow the instructions to complete the uninstallation, you cannot find the program in the Apps & Features listthe program's built-in uninstaller is non-functionalyou have a lot of leftovers slowing down your computer's performanceyou want to batch uninstalmany more things Download now

**Restore reboot rx. Reboot restore rx pro price. Reboot restore rx pro. Restore rx 7. Reboot restore rx free. Reboot restore rx pro license key. Reboot restore rx pro manual. Reboot restore rx pro 2022.**