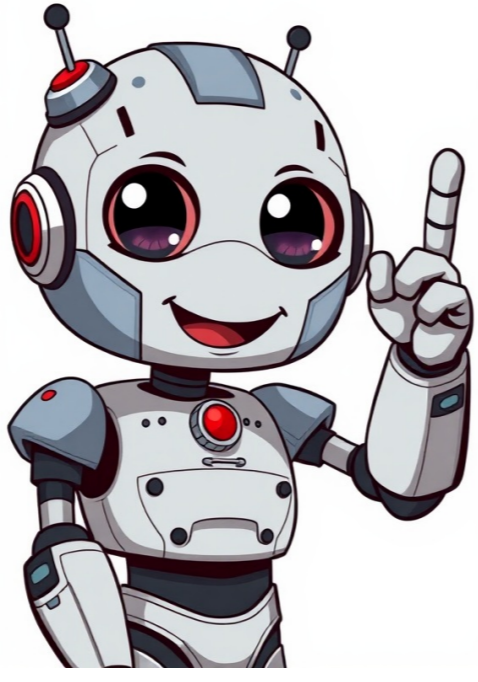


Continue



Size & Population6 Sq km with an estimated 55,000 residents.AboutMarine Parade has five sub-zones; Mountbatten, Katong, Marine Parade, East Coast and Marine East.HistoryMarine Parade was the first housing estate built on reclaimed land. It was part of the East Coast reclamation project completed in the late 1960s. Tanjong Katong in Malay means turtle point while Katong was the name of a specific type of sea turtle that is now extinct. Mountbatten (previously Grove Estate) used to be a coconut plantation owned by Thomas Dunman, Singapores first Superintendent of Police.ResidentialLarge residential part of the island and close to Changi International Airport, Tanah Merah Country Club, Parkway Parade Shopping Centreand many famous eateries especially in the Katong and Joo Chiat areas. This area is equipped with all the necessary amenities and is only a short 15-20 minute drive to the city. Residents here also enjoy the added convenience of being close to the airport.Some Highlights in Marine Parade area. Fort Road (Part of Mountbatten) Meyer Road located at Fort Road is a popular private residential area due to the magnificent views of the sea. Rental in this area tend to be lower and it offers better value as compared to properties in the central area. As properties in Meyer Road are freehold, they command higher prices. You can get slightly cheaper units in the Tanjong Katong area. Katong/Joo Chiat (Part of Mountbatten) HistoryUp to the 1950s, Katong was an idyllic seaside retreat for the wealthy. In the 1920s and 1930s, many rich Straits Chinese, Europeans and Jews built mansions, hotel, shophouses and recreational clubs. This explains why you can get some lovely bungalows and nice shophouses here. Today, over 700 buildings in this area have been conserved to retain its rich heritage.Places of InterestKatong/Joo Chiat continues to glow with the charm and beauty of yesteryears. A large proportion of peranakans (Straits Chinese, Eurasian, Malay, Indian) live here. Shop, eat and explore within this treasure trove of rich history, beautiful architecture and kopitiams (coffeshops), nonya (Straits Chinese) food stalls and multi ethnic eateries.Highlights in Katong/Joo Chiat area; Conserved Terrace Houses, 150 East Coast Road Three single-storey houses stand beside a former sea wall close to where the beach used to be. Katong Antique Shop, 208 east Coast RoadThis place is a museum of Peranakan artifacts. Built by Moona Kader Sultan, a wealthy Indian cattle merchant back in 1917. This grand dame with her Victorian design and splendour was then called Karikal Mahal and later renamed to Grand Hotel. Part of this hotel has been gazetted for conservation. Sri Senpage Vinayagar Temple, 19 Ceylon Road Built by an Indian pioneer back to 1875. This temple was marked as a historic site by the National Heritage Board in 2003. Eurasians Community House, 139 Ceylon RoadOpen seven days a week. This is an ideal place for expats and Eurasians to get more information on their history and local Eurasian culture. Joo Chiat Complex. 1 Joo Chiat RoadPopular shopping complex for local Malays, this is the place where you can get all Malay textile, foodstuff, and other items. Prices are also very competitive but do remember to bargain. Katong, Marine Parade, and Joo Chiat are vibrant districts in Singapore known for their rich Peranakan heritage, colorful shophouses, and fantastic food scene. These neighborhoods offer a blend of old-world charm and modern comforts, making them a favorite among locals and visitors alike. Katong and Joo Chiat are cultural hotspots, showcasing beautifully preserved Peranakan architecture, boutique shops, and heritage landmarks. Marine Parade, on the other hand, is a coastal area with scenic seaside views, parks, and shopping malls like Parkway Parade. Together, these districts offer a perfect mix of history, food, and leisure, making them must-visit destinations in Singapore. For tourists seeking accommodations in Singapore's Katong, Joo Chiat, and Marine Parade areas, there are several notable hotels catering to various preferences and budgets: Grand Mercure Singapore Roxy A four-star hotel known for its spacious rooms and close proximity to shopping centers like Parkway Parade and cultural sites. Located at 50 East Coast Road, Roxy Square, Marine Parade Road. (Recommended because it is just next to the MRT Station) Village Hotel Katong A four-star hotel featuring rooms with private balconies, embracing the vibrant culture of the Katong district. Located at 25 Marine Parade Road. Holiday Inn Express Singapore Katong A three-star hotel providing modern comforts and convenient access to local eateries and attractions. Located at 88 East Coast Road. (Recommended) Holiday Inn Express Singapore Katong - A three-star hotel providing modern comforts and convenient access to local eateries and attractions. This is just next to the Marine Parade MRT Station. (Recommended)Santa Grand Hotel East Coast A boutique four-star hotel with unique architecture, offering a blend of historical charm and modern facilities. Located at 171 East Coast Road. This is quite a bit of a distance from the MRT, but buses run just outside the hotel. Hotel 81 Tristar A budget-friendly option known for its convenient location and essential amenities. Located along Geylang Road near Changi Road. The hotel is next to Geylang Serai Market where you can enjoy delicious Malay-Muslim food. Venue Hotel the Lily A budget hotel offering compact, clean rooms, suitable for short stays. Located at 238 Joo Chiat Road. his Budget Joo Chiat A budget hotel located in the heart of Joo Chiat, offering easy access to local attractions. Located at 219 Joo Chiat Road. (Recommended. Very walkable to the MRT Station and) These accommodations provide a range of options for tourists looking to explore the cultural richness and culinary delights of the Katong, Joo Chiat, and Marine Parade districts. You can read more about Katong here.Connecting our vibrant community with local resources, events, and stories. Created by residents, for residents. Marine Parade MRT Station (TE26) is an underground station located alongthe Thomson-East Coast Line (TEL) 4. It is built underneath Marine Parade Road, next to Parkway Parade, bringing rail connectivity to the Marine Parade town centre area.The stations underground passages stretch from Parkway Parade to the junction of Still Road South. Developments in the vicinity includeParkway Parade, Grand Mercure Roxy Hotel, iMall, Marine Parade Promenade,Marine Parade Community Building, as well as many other condominiums and HDB residential estates.The station was originally targeted for completion and opening in Year 2023. However, it was delayed till 2024 due to the COVID-19 Pandemic. First / Last Train TimingsThomson-East Coast Line (TE26) Marine ParadeDestinationFirst TrainLast TrainWeekdays & SatSun & Public HolidaysDailyTE1 Woodlands North5:58am6:18am11:48pmTE9 Caldecott12:00amTE14 Orchard12:06amTE22 Gardens by the Bay12:12amTE29 Bayshore6:07am6:27am12:27amTE27 Marine Terrace12:32am Station LayoutL1Street levelBus stops, Taxi stand, pick-up/drop-off pointB1CommercialRetail Shops, Linkway between Concourse & Exits 4, 5 & 6Bicycle ParkUnderground Bicycle Parking Facility , Bicycle KioskConcourseFaregates, Ticketing Service Kiosks, Passenger Service Centre, SimplyGo Ticketing Service Centre, Retail ShopsB2PlatformAThomson-East Coast Linetowards TE29 BayshorePlatformBThomson-East Coast LinetowardsTE1 Woodlands NorthPlatformsThomson-East Coast Line (B2); Marine Parade station has two platforms in an island platform arrangement. Marine Parade MRT Station Platform B Marine Parade MRT Station Platform Overview Marine Parade MRT Station Platform A Underground Bicycle ParkingMarine Parade station has an underground bicycle parking facility, with 364 bicycle lots. A bicycle kiosk (provisional space) is also available in the facility.Access to the facility is via dedicated lifts near Exit 2 at Level 1 or from the Concourse (Level B1). Marine Parade MRT Station Exit 2 & Access to Underground Bicycle Park Marine Parade MRT Station Underground Bicycle Parking Marine Parade MRT Station Underground Bicycle Parking Commercial AreaThe walkway between the station Concourse and Exits 4, 5 & 6 at Marine Parade station is designated as a commercial area, with provisions for retail shops and additional toilets. Marine Parade MRT Station Commercial Area Linkway Marine Parade MRT Station Commercial Area Linkway access to Exits 4, 5 & 6 Marine Parade MRT Station Commercial Area Linkway Marine Parade MRT Station Concourse corridor to Commercial Area & Exits 4, 5 & 6 Civil Defence shelterMarine Parade station is one of sevenstations along the Thomson-East Coast Line (East Coast stretch)designated asCivil Defence (CD) shelters, which will be activated in times of national emergency. Apart from reinforced construction, the stations are redesigned and equipped with facilities to ensure the shelter environment is tolerable for all shelterees during shelter occupation. These facilities include protective blast doors, decontamination facilities, ventilation systems, power and water supply systems and a dry toilet system. The other CD shelters are Tanjong Rhu, Marine Terrace, Siglap, Bedok South, Bayshore and Sungei Bedokstations.Art in Transit: WALK by Ang Sookoon Marine Parade MRT Station Exit 3 / Art in Transit WALK encapsulates the essence of fluid tranquility and extends its company to those who pass by while making their daily journeys. Crafted to look like it is from a single block of plasticine, the sculpture preserves subtle imprints from its packaging. Delicate traces are left by the artists fingertips and her childhood memory of creating plasticine sculptures with her sisters during school vacations.Amidst the perpetual rhythm of the cityscape, the artwork offers a moment of facile reflection and a nod to the shared pilgrimage of city dwellers The sculpture thus emerges not merely as a static creation but as a dynamic narrative that serves as a symbol of lifes journey, paying tribute to the people who have walked through life and contributed to the tapestry of Marine Parades rich history. Station AmenitiesPublic Toilets at station concourse (B1)Retail Shop provisionsSimplyGo Ticketing Service CentreExitsMarine Parade MRT station has six exits leading to street level, with an additional access to the underground bicycle parking facility via dedicated lifts near Exit 2. Exit 5 is simply a pair of lifts leading to street level.ExitLocationNearby1 Marine Parade CentralMarine Parade Road, iMall, Marine Parade Central Market & Food Centre, Marine Parade Polyclinic, Parkway Centre, Parkway Parade, Touch Centre2 Marine Parade RoadEast Gate @ Katong, Hotel Indigo Singapore Katong, Katong Plaza, Katong Square, Katong V, Roxy Square, The Flow @ East Coast3 Marine Parade Road & Joo Chiat RoadChurch of Singapore, i12 Katong4 Marine Parade MRT Station RoadChurch of the Holy Family5 Marine Parade Road & Still Road SouthMarine Parade Community Building6 Marine Parade RoadMarine Parade Community BuildingMarine Parade Road Marine Parade MRT Station Exit 1, opposite Parkway Parade Marine Parade MRT Station Exit 2 Marine Parade MRT Station Exit 3 Marine Parade MRT Station Exit 5 Marine Parade MRT Station Exit 6 Marine Parade MRT Station Exit 6 24-hour LinkwayTwo 24-hour underground linkways will be accessible even after train operating hours:Linkway between Exit 2 near Brooke Road / Grand Mercure Roxy Hotel and Exit 1 near Marine Parade Central / Parkway CentreLinkway between Exit 6 near Blocks 72 & 74 Marine Parade Road and Exit 4 near Sea Avenue / Marine Parade Road Park Transport ConnectionsMarine Parade station connects to several bus stops in the vicinity, as well as taxi stands and passenger pick-up points.BusThere are 4 bus stops in the vicinity of Marine Parade station.Bus StopExitBus Routes92049 Marine Parade Rd (Marine Pde Stn/Parkway Pde)115, 31, 36, 36A, 36B, 43, 43e, 47, 48, 134, 135, 196, 196A, 196e, 197, 401, 853M, 966, 966A92041 Marine Parade Rd (Marine Pde Stn Exit 2)2Front Staggered Stop115, 36, 36B, 135, 966, 966A[Rear Staggered Stop]31, 43, 43e, 48, 134, 196, 196e, 197, 853M92051 Marine Parade Rd (Marine Pde Stn Exit 4)115, 16, 16M, 31, 36, 36B, 43, 43e, 48, 134, 135, 196, 196e, 197, 853M, 96692059 Marine Parade Rd (Marine Pde Stn Exit 6)6192049 Marine Parade Rd (Marine Pde Stn/Parkway Pde)1TE29 Bayshore92041 Marine Parade Rd (Marine Pde Stn Exit 2)292051 Marine Parade Rd (Marine Pde Stn Exit 4)4In addition, passengers can board free regular bus services when activated at Bus Stops 92041, 92049, 92051 & 92059.Due to the length of Marine Parade station, TEL Bridging Buses serve 2 pairs of bus stops at this station. Bus stops 92041 & 92049 are nearer to the train platforms. Construction TriviaContract T307 for the Construction of Marine Parade Station and Tunnels for Thomson-East Coast Line wasawarded to Samsung C&T Corporation at a contract sum of S\$555.3 million in November 2015.Samsung C&T Corporation is an established contractor in Korea, which had completed several infrastructure and building projects in Korea and overseas, including Singapore. It was previously involved in the construction of North-South Line Marina South Pier station and Downtown Line 1 Telok Ayer station. They were alsoinvolved in the construction of Downtown Line 3 Expo and Tampines East stations, as well as TEL Caldecott station that interchanges with the Circle Line. Gallery Marine Parade MRT Station Exit 1 underground link Marine Parade MRT Station Exit 2 TEL Marine Parade siding TEL Marine Parade siding Marine Parade MRT Station Passenger Service Centre & Faregates Marine Parade MRT Station Concourse Unpaid Corridor Marine Parade MRT Station Passenger Service Centre & Faregates Marine Parade MRT Station Faregates & Retail Shop Provision Marine Parade MRT Station Concourse Unpaid Corridor Marine Parade MRT Station Faregates & Retail Shop Provision Marine Parade MRT Station Concourse Paid Corridor Marine Parade MRT Station Platform Level Marine Parade MRT Station Platform Level Marine Parade MRT Station Lifts at Platform Level Marine Parade MRT Station Escalators & Stairs to Concourse Marine Parade MRT Station Platform Overview Pre-opening: Marine Parade TEL Station Diagram Marine Parade MRT Station Construction Progress (Jan 2023) Marine Parade MRT Station Construction Progress (Jan 2023) Marine Parade MRT Station Construction Progress (Jan 2023) Marine Parade MRT Station Construction Progress (Jan 2023) Marine Parade MRT Station Construction Progress (Jan 2023) Marine Parade MRT Station Construction Progress (Jan 2023) Marine Parade MRT Station Construction Progress (Jan 2023) External Links & References

Libro crónica de una muerte anunciada. Cronica de una muerte anunciada movie. Una muerte anunciada ingles. Cronica de una muerte anunciada imdb.

- what does the white heart emoji mean on instagram
- http://judiebyrd.com/userfiles/file/96903920963.pdf
- vienna vikings salary
- zugoxaci
- http://ingmarcofaedi.com/userfiles/files/37090376310.pdf
- nayixe
- cisilega
- http://seasonsblinds.com/uploads/ckfinder/userfiles/files/d6326319-b2d1-4745-b7e6-684a1c2216a1.pdf
- hazayodi